

Supplementary Table 1. Incidence of atrial fibrillation (AF) in the managed ventricular pacing (MVP) group versus the control group.

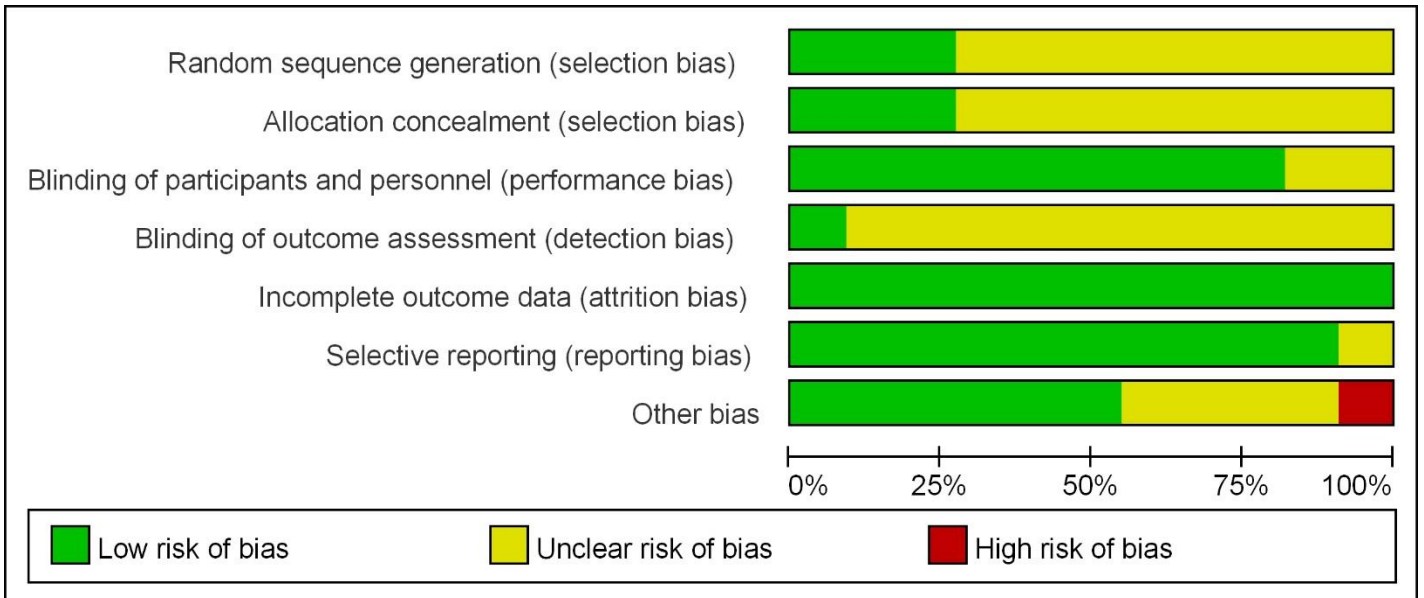
Study	Onset of AF in MVP group (%)	Onset of AF in control group (%)
Sweeney et al. [10] 2010	7.7 (n=40)	7.4 (n=38)
Pakarinen and Toivonen [11] 2013	10.3 (n=20)	11.3 (n=22)
Boriani et al. [5] 2014	3.4 (n=13)	8.3 (n=33)
Botto et al. [12] 2014	15.4 (n=46)	11.2 (n=34)
Davy et al. [13] 2012	7 (n=10)	8.5 (n=24)
Gillis et al. [2] 2006	31.7 (n=41)	27.1 (n=35)
Malliet et al. [17] 2014	30.4 (n=15)	28.2 (n=14)
Stockburger et al. [6] 2015	49.0 (n=156)	60.8 (n=191)

Sweeney et al. [7] 2007	7.9 (n=42)	12.7 (n=68)
Thibault et al. [8] 2015	3.7 (n=7)	8.8 (n=16)
Veasey et al. [9] 2011	9.0 (n=3)	42.0 (n=14)

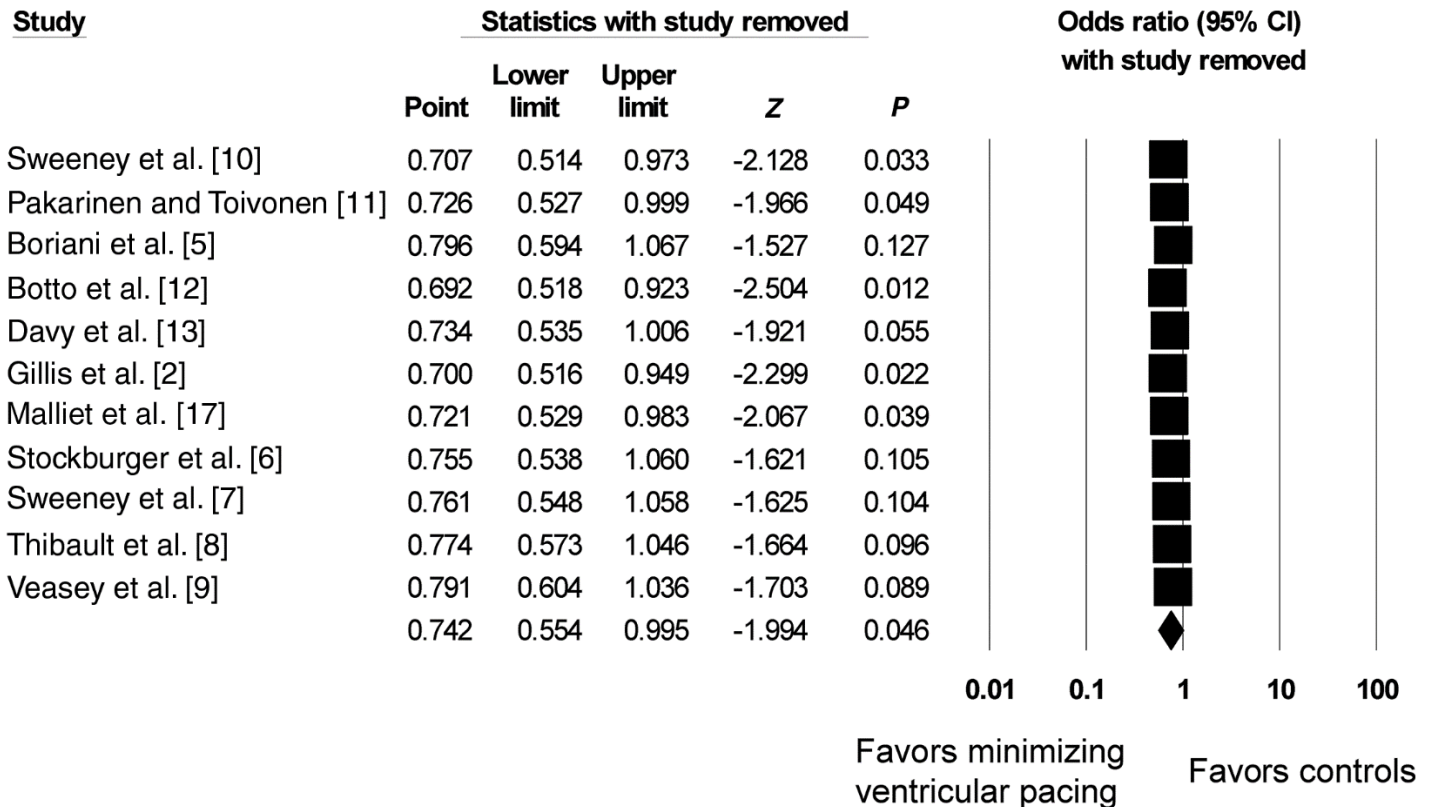
	Random sequence generation (selection bias)	Allocation concealment (selection bias)	Blinding of participants and personnel (performance bias)	Blinding of outcome assessment (detection bias)	Incomplete outcome data (attrition bias)	Selective reporting (reporting bias)	Other bias
Boriani et al. [5]	+	+	+	?	+	+	+
Botto et al. [12]	+	+	+	?	+	+	+
Davy et al. [13]	?	?	+	?	+	+	+
Gillis et al. [2]	?	?	+	?	+	+	?
Malliet et al. [17]	?	?	+	?	+	?	?
Pakarinen and Toivonen [11]	?	?	?	?	+	+	-
Stockburger et al. [6]	?	?	+	?	+	+	?
Sweeney et al. [7]	+	+	+	?	+	+	+
Sweeney et al. [10]	?	?	+	?	+	+	?
Thibault et al. [8]	?	?	+	?	+	+	+
Veasey et al. [9]	?	?	?	+	+	+	+

Supplementary Figure 1

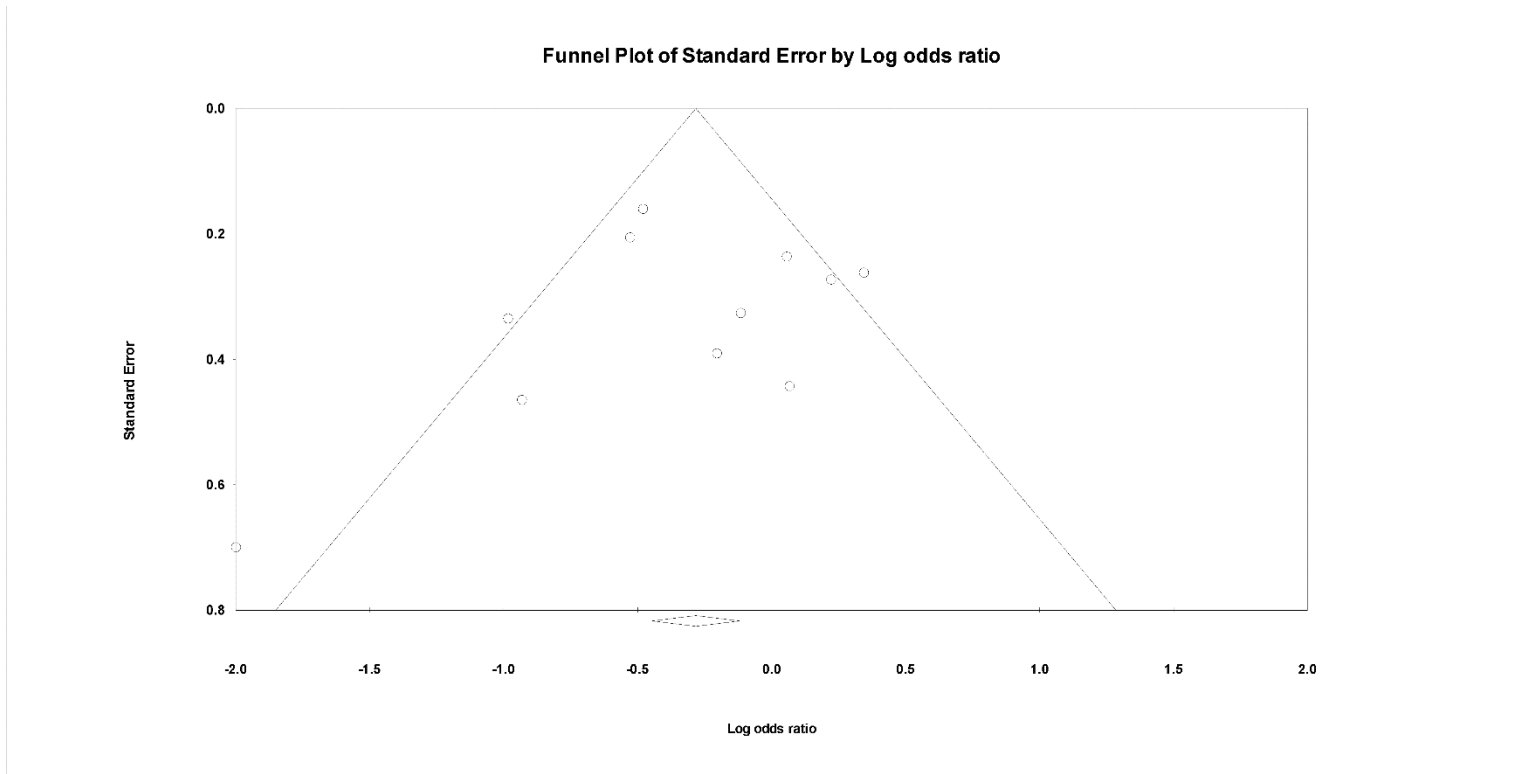
Supplementary Figure 2



Supplementary Figure 3



Supplementary Figure 4



Supplementary Figure 5

